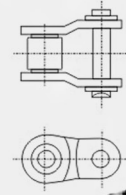
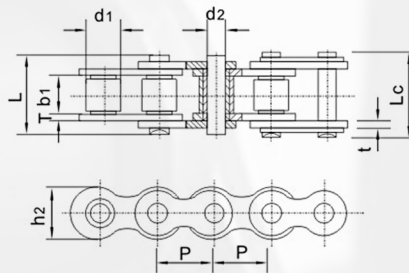
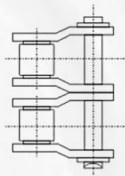
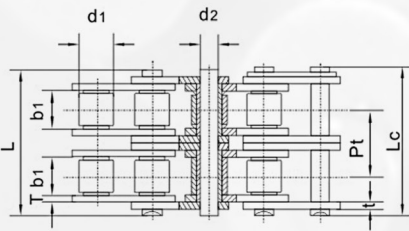
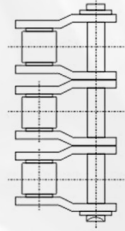
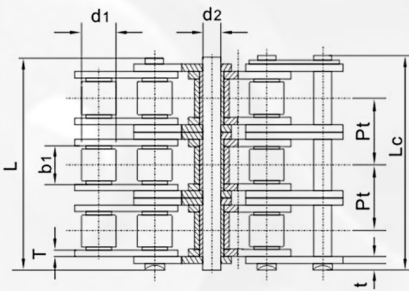


CADENAS DE PRECISIÓN DE RODILLOS

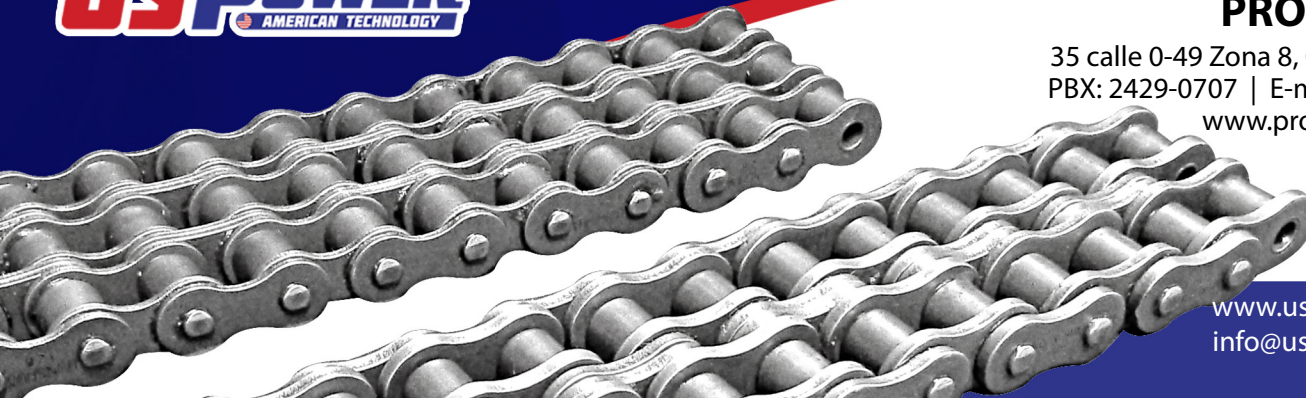
Calidad y tecnología americana.



ANSI Chain No.	DIN/ISO Chain No.	Pitch		d1 max mm	b1 min mm	d2 max mm	t/T mm	h2 max mm	Pt mm	L max mm	Lc max mm	U.T.S KN	A.T.S KN	g kg/m
		mm	inch											
25-1	04C-1	6.35	1/4"	3.30	3.10	2.31	0.80	6.00	6.40	7.95	8.70	3.50	4.20	0.15
25-2	04C-2									14.40	15.15	7.00	8.40	0.28
35-1	06C-1	9.525	3/8"	5.08	4.77	3.58	1.26	8.70	10.13	12.30	13.30	7.90	9.36	0.33
35-2	06C-2									22.30	23.40	15.80	18.72	0.63
35-3	06C-3									32.70	33.50	23.70	28.08	1.05
41-1	085	12.70	1/2"	7.77	6.38	3.58	1.20	9.60	14.38	13.60	14.70	6.70	8.04	0.41
40-1	08A-1	12.70	1/2"	7.92	7.85	3.97	1.50	12.00	14.38	16.50	17.90	13.90	16.56	0.61
40-2	08A-2									30.90	32.30	27.80	33.12	1.12
40-3	08A-3									45.00	46.70	41.70	49.68	1.90
50-1	10A-1	15.875	5/8"	10.16	9.40	5.08	2.03	15.05	18.11	20.60	21.90	21.80	26.16	1.04
50-2	10A-2									38.40	40.00	43.60	52.32	2.00
50-3	10A-3									56.50	58.10	65.40	78.48	3.10
50-4	10A-4									74.50	76.10	87.20	104.64	4.30
60-1	12A-1	19.05	3/4"	11.91	12.57	5.94	2.42	18.00	22.78	25.48	26.70	31.30	37.32	1.50
60-2	12A-2									48.40	49.50	62.60	74.76	2.92
60-3	12A-3									71.30	73.10	93.90	112.08	4.54
60-4	12A-4									93.80	96.00	125.20	149.28	6.21
60-5	12A-5									116.60	119.00	156.50	184.80	7.75
60-6	12A-6									139.40	142.60	187.80	212.52	9.31

Cadenas de precisión de rodillos

ANSI Chain No.	DIN/ISO Chain No	Pitch		d1 max mm	b1 min mm	d2 max mm	t/T mm	h2 max mm	Pt mm	L max mm	Lc max mm	U.T.S KN	A.T.S KN	q kg/m
		mm	inch											
80-1	16A	25.40	1"	15.88	15.75	7.94	3.23	23.50	29.29	32.70	34.10	55.60	66.72	2.60
80-2										61.10	63.40	111.20	133.44	5.15
80-3										91.70	94.20	166.80	200.16	7.89
80-4										120.80	123.50	222.40	266.88	10.37
80-5										150.10	153.00	275.80	330.96	12.96
80-6										179.40	182.50	317.00	380.40	15.50
100-1	20A	31.75	1"1/4	19.05	18.90	9.53	4.00	30.00	35.76	40.00	43.10	87.00	104.04	3.91
100-2										75.80	78.90	174.00	208.20	7.80
100-3										110.00	115.30	261.00	312.24	11.77
100-4										147.40	151.10	348.00	416.16	15.60
100-5										183.20	187.00	435.00	516.00	19.46
100-6										219.00	223.00	522.00	603.36	23.36
120-1	24A	38.10	1"1/2	22.23	25.22	11.10	4.80	36.20	45.44	50.50	54.00	125.00	149.52	5.62
120-2										95.94	99.40	250.00	298.92	11.70
120-3										141.40	144.90	375.00	448.44	17.53
120-4										186.20	189.50	500.00	598.08	23.56
120-5										232.30	235.80	625.00	741.60	29.40
120-6										277.70	281.20	750.00	867.24	35.30
140-1	28A	44.45	1"3/4	25.40	25.22	12.70	5.60	42.00	48.87	53.50	57.80	170.00	202.80	7.50
140-2										102.50	106.70	340.00	405.72	15.14
140-3										151.50	155.80	510.00	608.52	22.20
140-4										200.40	204.70	680.00	811.20	29.67
140-5										249.30	253.50	850.00	1005.84	37.06
140-6										298.10	302.40	1020.00	1176.24	44.45
160-1	32A	50.80	2"	28.58	31.55	14.27	6.50	48.26	58.55	64.67	70.67	223.00	266.88	10.10
160-2										124.02	130.02	446.00	533.76	20.14
160-3										182.57	188.57	669.00	800.64	30.02
160-4										241.12	247.12	892.00	1067.52	40.35
160-5										299.67	305.67	1115.00	1323.72	50.40
160-6										358.22	364.22	1338.00	1547.88	60.45
180-1	36A	57.15	2"1/4	35.71	35.48	17.46	7.20	54.31	65.84	72.70	77.10	281.00	336.24	13.95
180-2										138.50	142.90	562.00	672.60	27.62
180-3										204.40	208.80	843.00	1008.84	41.29
180-4										270.20	274.60	1124.00	1344.96	54.96
180-5										336.00	340.40	1405.00	1667.76	68.63
180-6										401.90	406.30	1686.00	1950.24	82.30
200-1	40A	63.50	2"1/2	39.68	37.85	19.84	8.35	60.30	71.55	80.00	87.00	347.00	416.40	16.86
200-2										151.60	158.60	693.90	832.68	33.64
200-3										223.20	230.00	1040.90	1249.08	50.35
200-4										294.55	301.60	1388.00	1665.60	66.54
200-5										366.10	373.10	1721.00	2065.32	83.10
200-6										437.65	444.70	2012.60	2415.12	99.68
240-1	48A	76.20	3"	47.63	47.35	23.80	9.50	72.38	87.83	95.50	103.00	500.00	600.48	23.93
240-2										183.40	190.80	1000.00	1200.96	47.23
240-3										271.30	278.60	1500.00	1801.56	71.60
240-4										363.93	370.90	2000.00	2401.92	95.89
240-5										451.76	458.80	2500.00	2978.40	119.77
240-6										539.60	547.60	3000.00	3482.76	143.65



Distribuido por:
PROSAIN

35 calle 0-49 Zona 8, Ciudad de Guatemala.
PBX: 2429-0707 | E-mail: info@prosain.com
www.prosain.com

www.uspower.equipment
info@uspower.equipment